

Windows 8 Ten Image Guide

Introduction

Though the provided drivers were not officially compiled for Windows 8, they were designed and written to work with WinUSB and the user mode driver framework. In result machines having Windows 8 on board are also supported.

Image 1

For installation purpose and testing, the 64 bit Windows 8 Pro release has been used. Here is a system information pane.

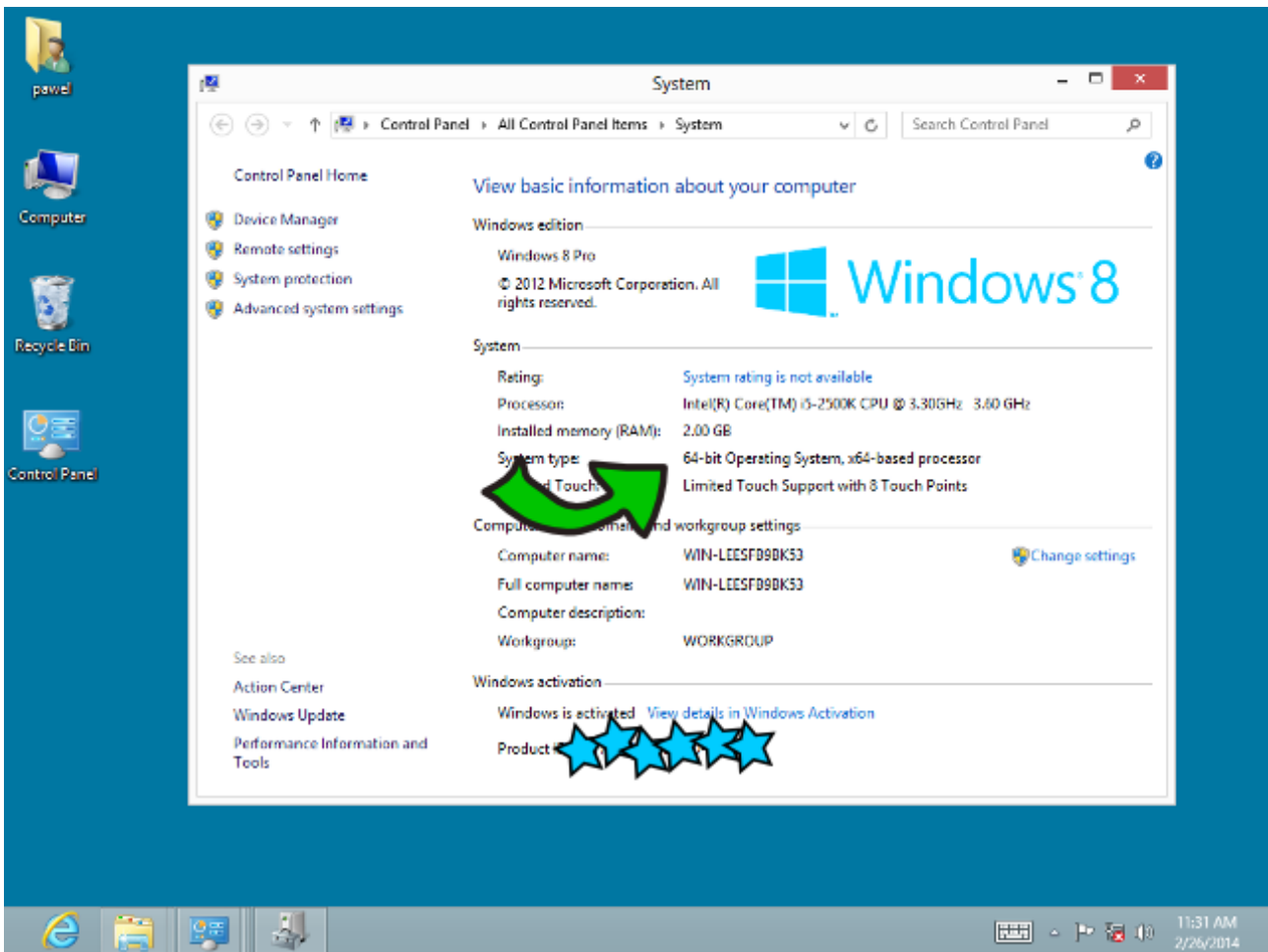


Image 2

When placed in one of USB slots, a device should also be visible in the device manager window. If the hardware key is properly detected by a host's USB controller, its LED gets lit too.

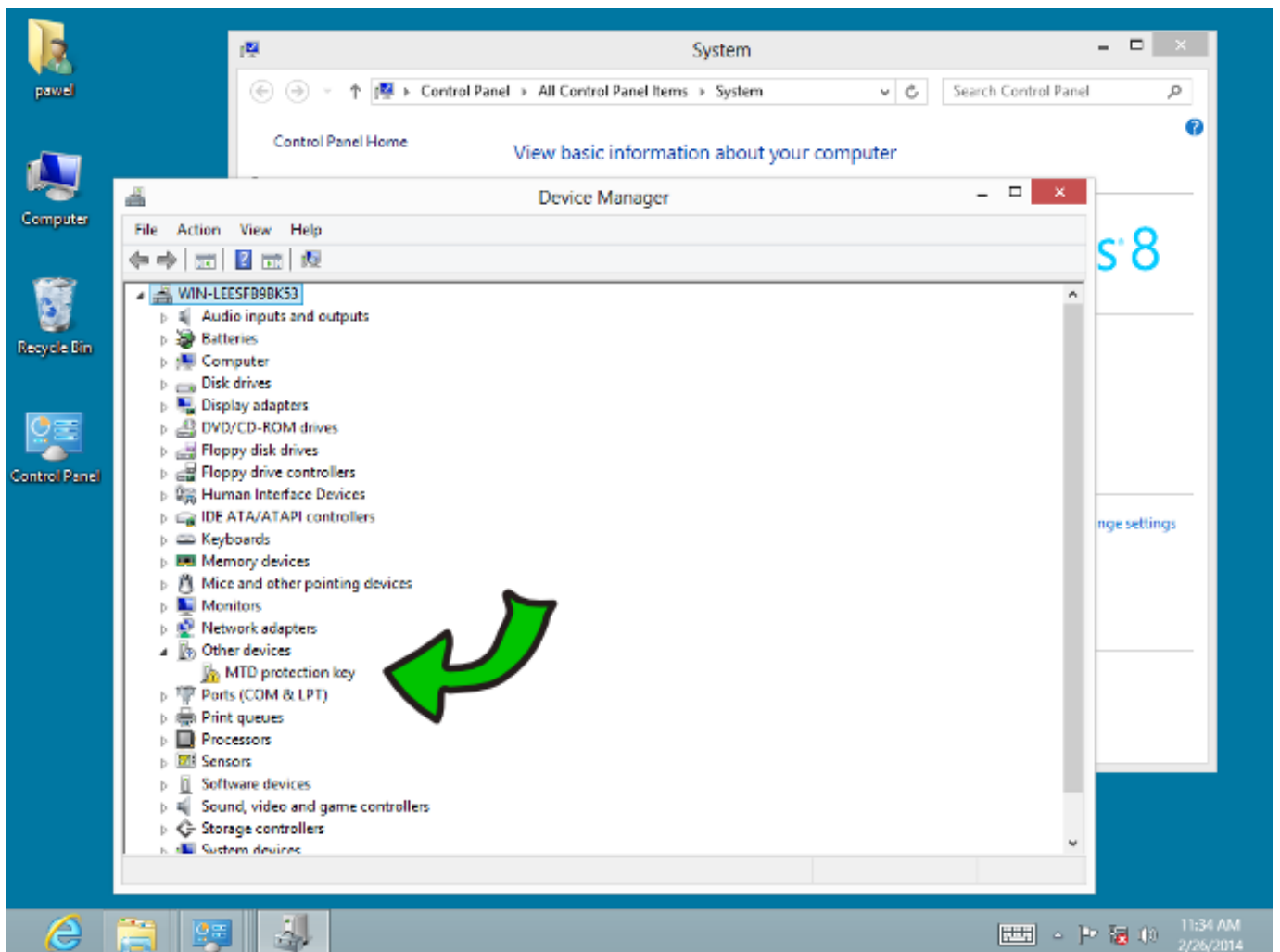


Image 3

Next step are certificates used to sign the drivers, they need to be installed before going any further. The "CA" certificates should be placed into the Trusted Root Certification Authorities Store and the remaining two in the Trusted Publishers Store. The certificates mentioned here can be found inside the downloaded driver package and the installation disc.

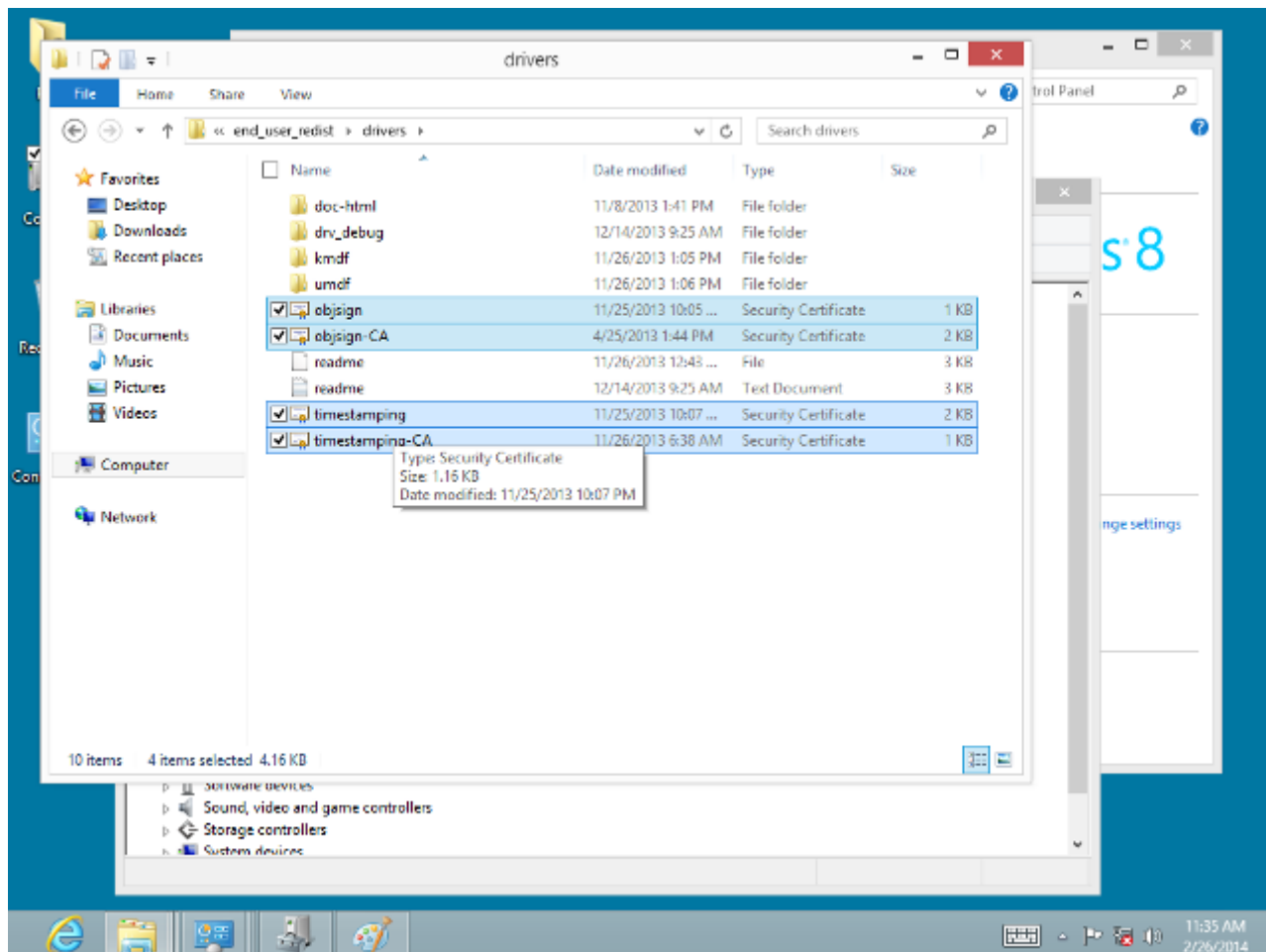


Image 4

Go back to the device manager window. Right-click the visible MTD protection key icon. Then, from a drop down list, pick and start the driver update wizard. Pick Browse my computer for driver software...

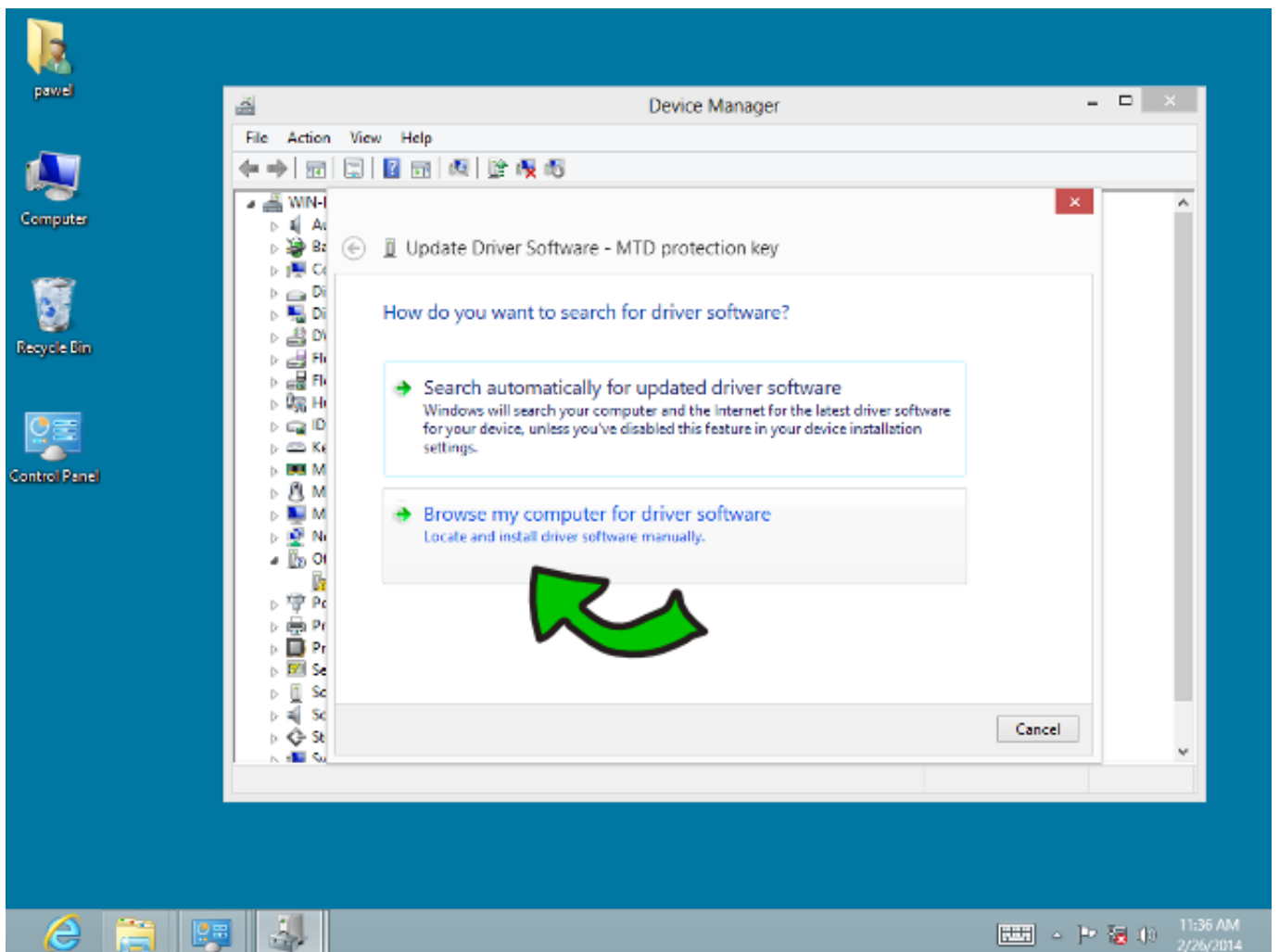


Image 5

Locate the Memory technology devices entry on the list and click it.

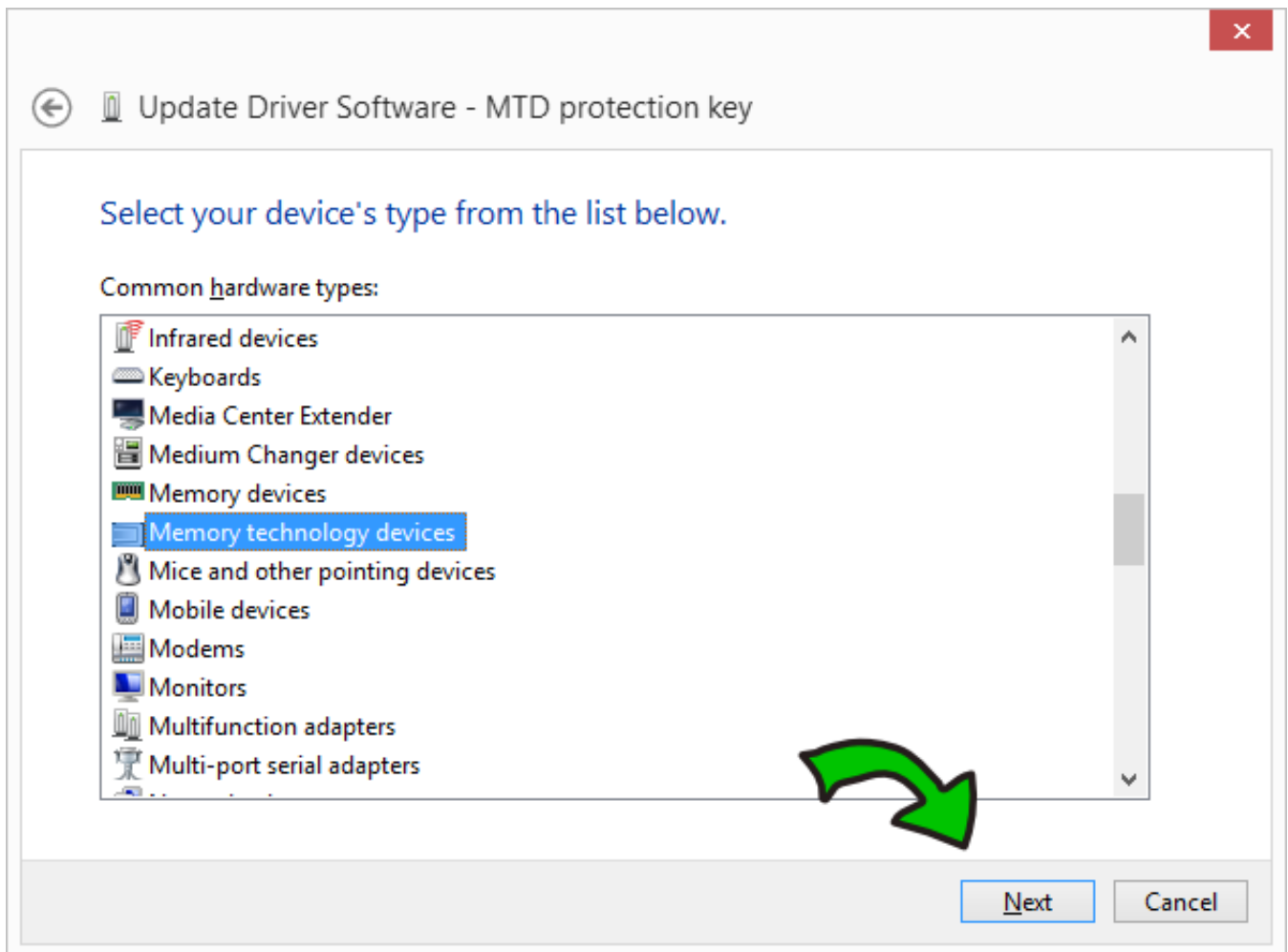


Image 6

Select Have Disk and navigate to the folder holding downloaded drivers in it.

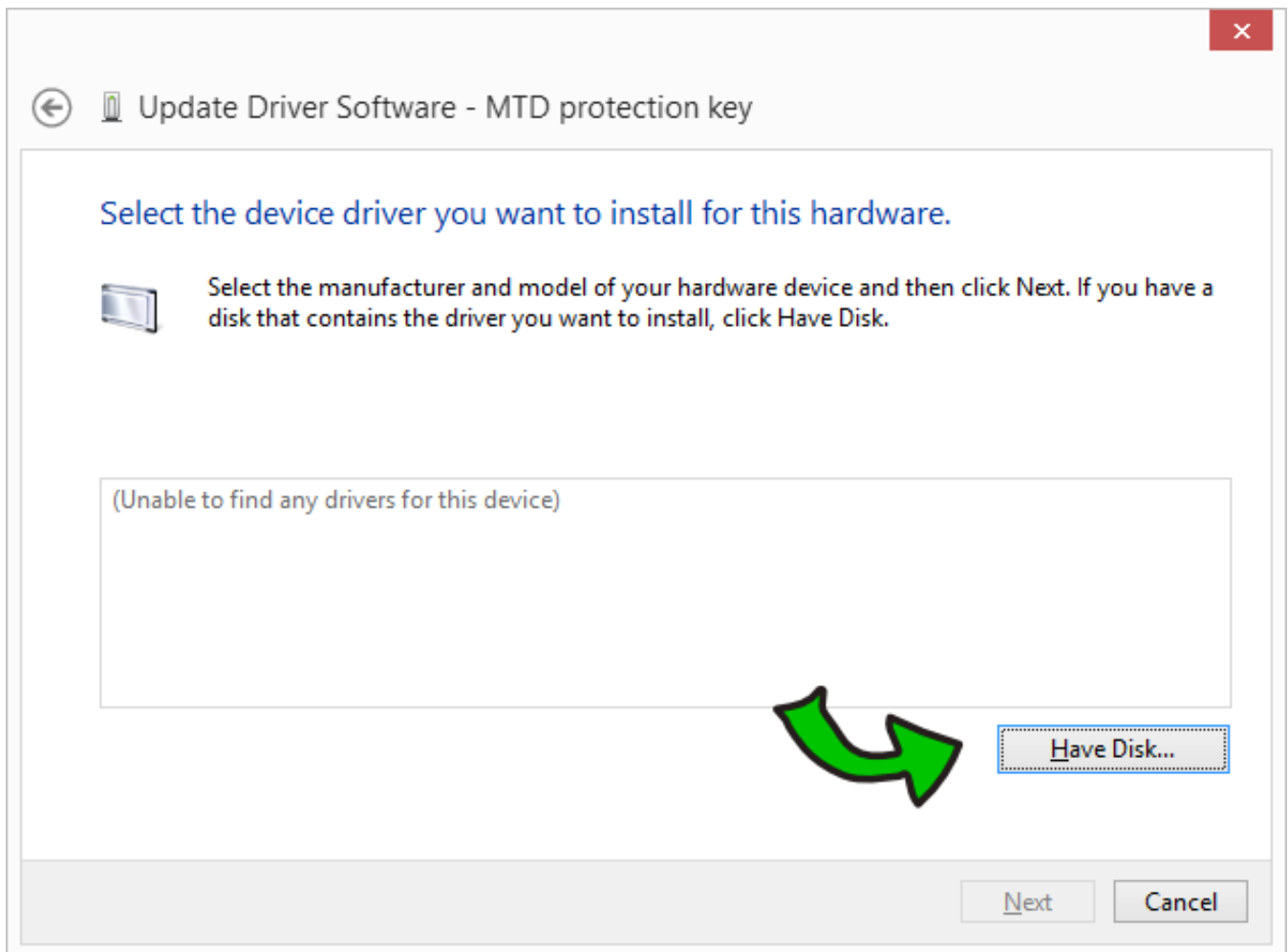


Image 7

Pick an INF file for your operating system.

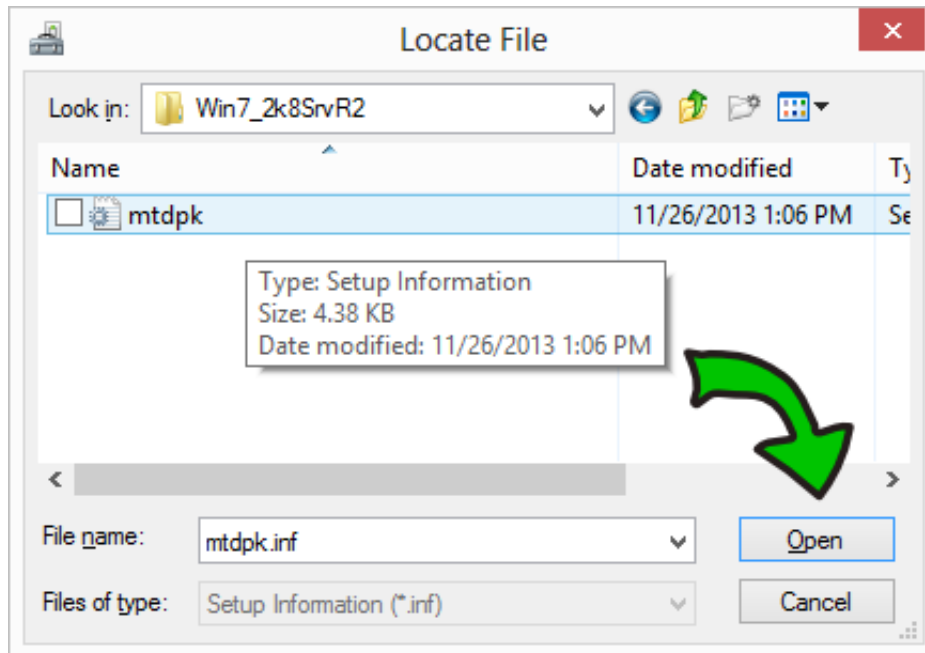


Image 8

The compatible hardware driver and the Authenticode(tm) signature confirmation will show up. Click Next to continue. If the missing signature warning is issued instead, abort and do not install the drivers!

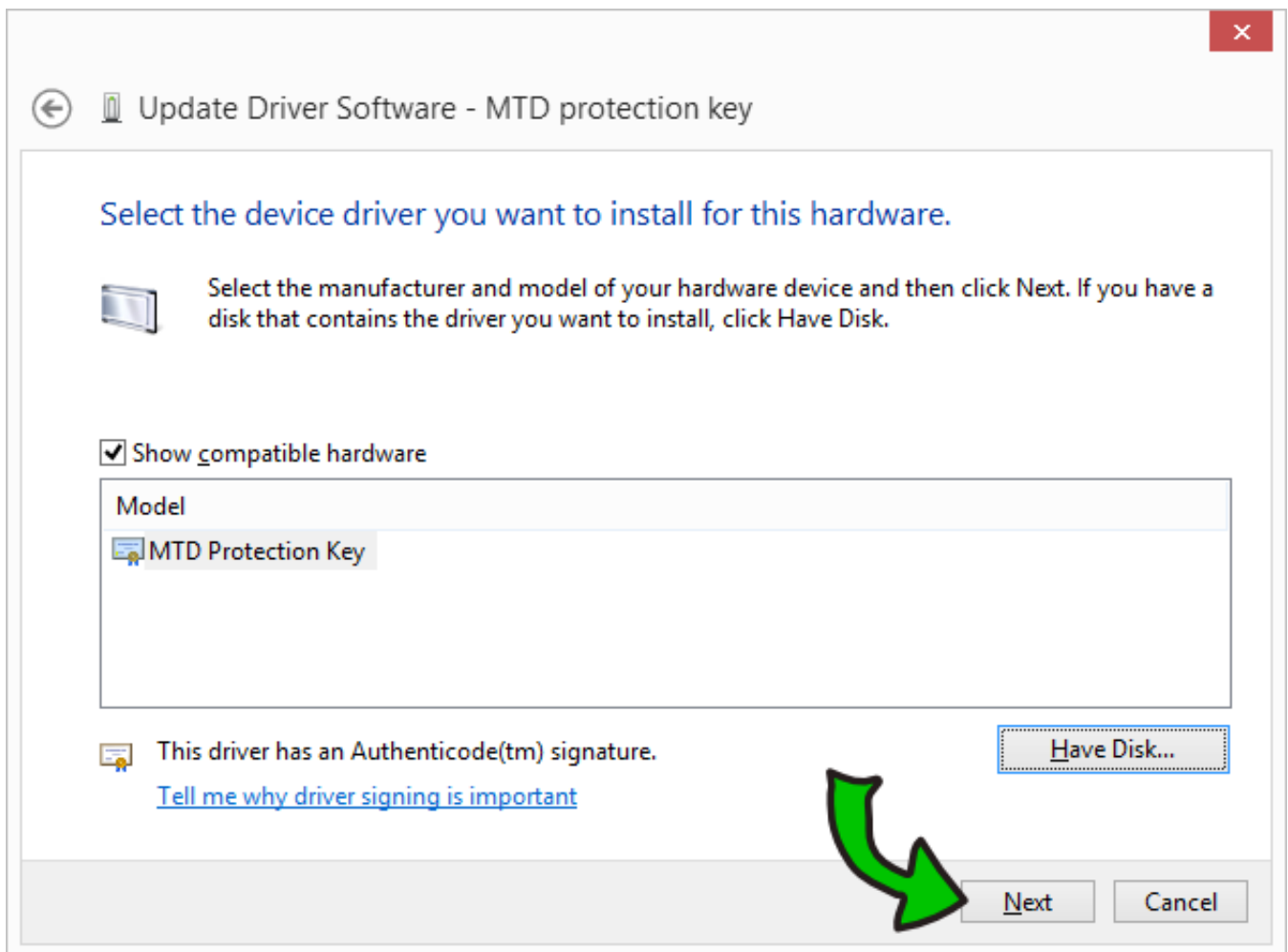


Image 9

Installation will begin. Success is signalled as follows.

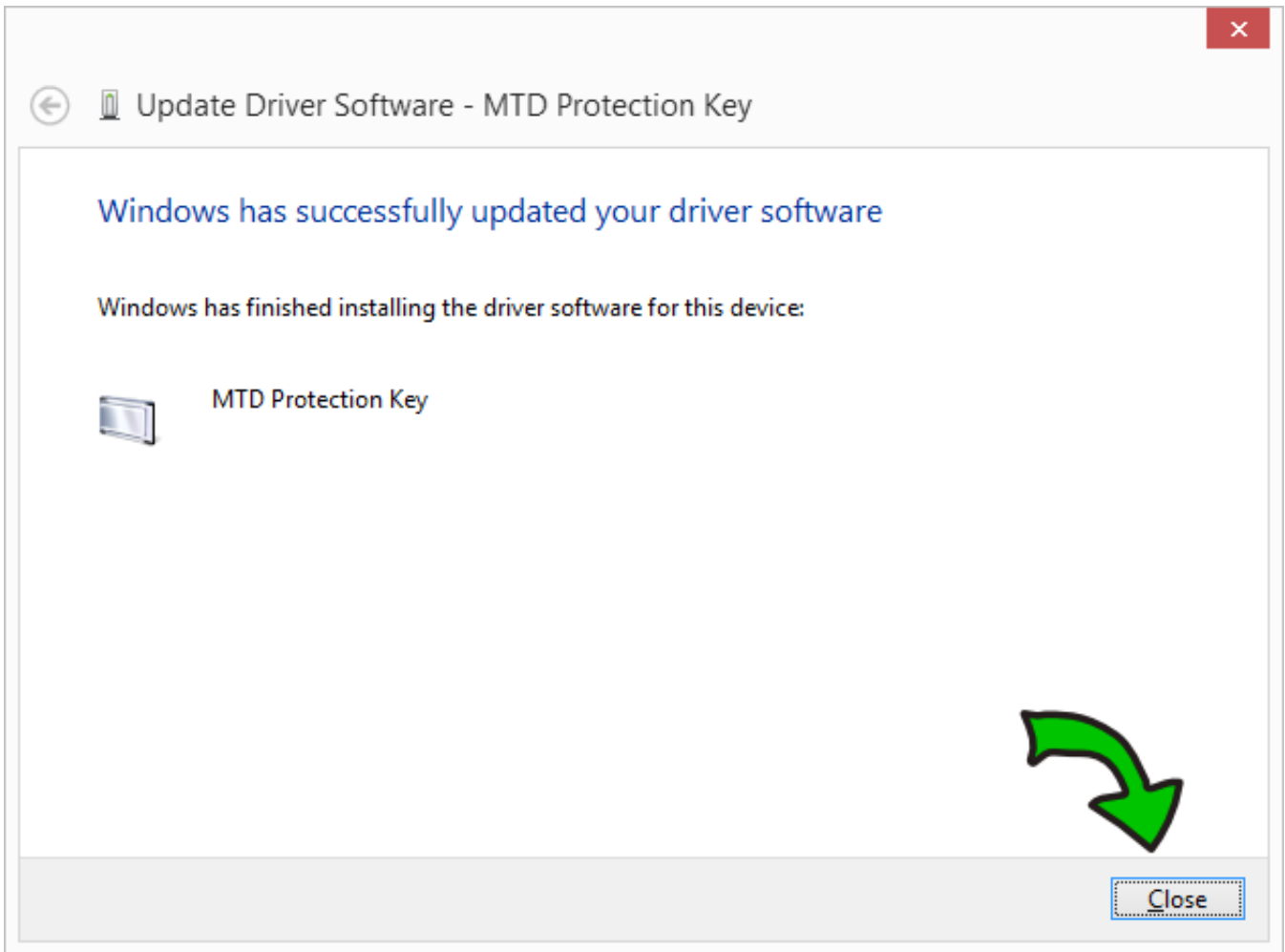


Image 10

Since the title says „ten image guide”, here is the 10th image, it shows device manager with a hardware device listed and the software used to program the keys, everything on one screenshot.

